

IS THERE A GOD? – APOLOGETICS BOOKLET



When printing the booklet, you can print by chapters as indicated below, or print the booklet in its entirety. The pages are designed to line up by printing them double sided. For a step-by-step instruction on how to print & make the booklet click [here](#).

Chapter 1-Kalam Cosmological argument (Does our Universe have a Beginning?): comic panels pg's 1-23 (*print pages 1-4*)

Chapter 2-Athropic Principle (is the Macro-World finely tuned?): comic panels pg's 24-38 (*print pages 4-8*)

Chapter 3-Irreducible Complexity (Is the Micro-World Finely Tuned?): comic panels pg's 39-56 (*print pages 7-10*)

Chapter 4-Teleological Argument (Is our Universe Designed?): comic panels pg's 57-65 (*print pages 9-12*)

Chapter 5-Transcendental Argument (is our Universe Random?): comic panels pg's 66-72 (*print pages 11-12*)

Chapter 6-Axiological Argument (Is our Universe Moral?): comic panels pg's 73-91 (*print pages 13-16*)

Chapter 7-Final Conclusion (puzzle page): comic panels pg's 92-98 (*print pages 16-17*)

Primary References

- [Cold Case Christianity](#) – book by J. Warner Wallace
- The Four Pillars of the Big Bang – lecture by palen
<https://physics.weber.edu/palen/Phsx1040/Lectures/LBigbang.html>
- What is the Anthropic Principle? – web article by Thoughtco.
<https://www.thoughtco.com/what-is-the-anthropic-principle-2698848>
- List of Fine-Tuning Parameters – web article by Discovery Institute
<https://www.discovery.org/a/fine-tuning-parameters/>
- What the lungfishes' genome teaches us about the vertebrates' conquest of land – web article by Phys.org
<https://phys.org/news/2021-01-lungfishes-genome-vertebrates-conquest.html>
- What is the teleological argument for the existence of God? – web article by GotQuestions.org
<https://www.gotquestions.org/teleological-argument.html>
- William Paley, "The Teleological Argument" Philosophy of Religion – web page
<https://philosophy.lander.edu/intro/paley.shtml>

IS THERE A GOD? – APOLOGETICS BOOKLET



- The Case For Christianity p.32 (Reasoning to Atheism) – book by C.S. Lewis
- What is the transcendental argument for the existence of God? – web article by GotQuestions.org
<https://www.gotquestions.org/transcendental-argument.html>
- Immanuel Kant – Web page by Internet Encyclopedia of Philosophy (IEP.utm.edu) <https://iep.utm.edu/kantview/>
- Moral Arguments for the Existence of God – Web page by Standford Encyclopedia of Philosophy (plato.stanford.edu) <https://plato.stanford.edu/entries/moral-arguments-god/>

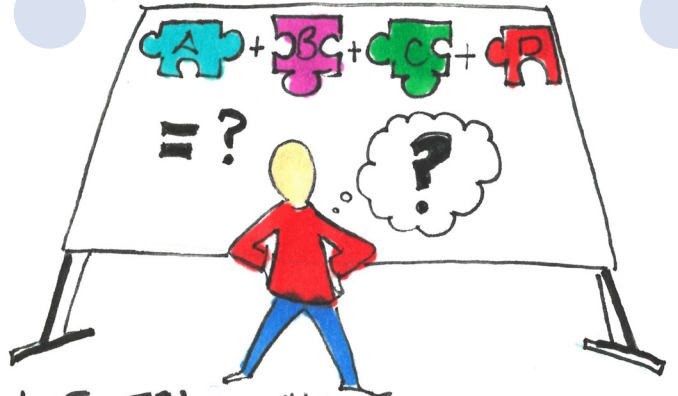
Looking for another great resource, try downloading & printing '[Is the Bible Credible?](#)' booklet.

TRUTH:



WE NEVER HAVE 100% OF THE FACTS. DO YOU AGREE?

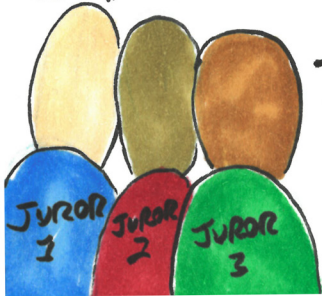
1



WE TAKE THE FACTS WE HAVE & KNOW & MAKE A DECISION

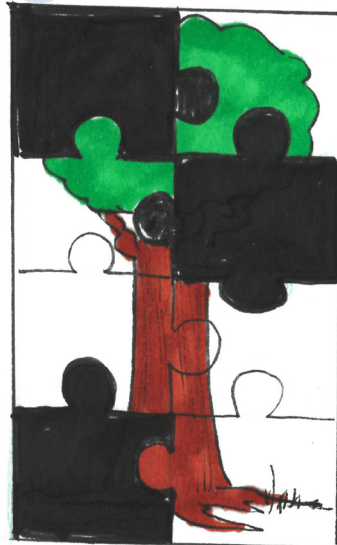
3

SHOULD WE DO SOMETHING?



A JURY WAS NOT PRESENT FOR THE CRIME

5



EVEN WITHOUT ALL THE PIECES, WE CAN SAY BEYOND A REASONABLE DOUBT THAT THIS IMAGE IS A TREE.

7

LOOKS LIKE AS GOOD A PLACE AS ANY

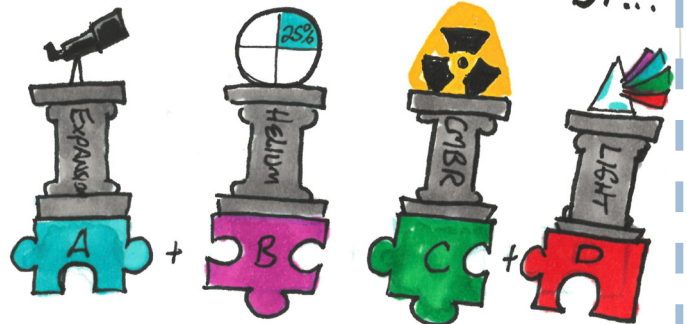


BUT WHERE DO WE BEGIN?

WHY NOT AT THE BEGINNING?

9

HOW DID SCIENCE COME TO THAT CONCLUSION? THROUGH CUMULATIVE EVIDENCE OF...



...THE 4 PILLARS

11

THE COURT OF LAW OPERATES THIS WAY



4



ONE PIECE OF EVIDENCE IS NOT ENOUGH TO MAKE A DECISION, WE DON'T HAVE THE FULL PICTURE

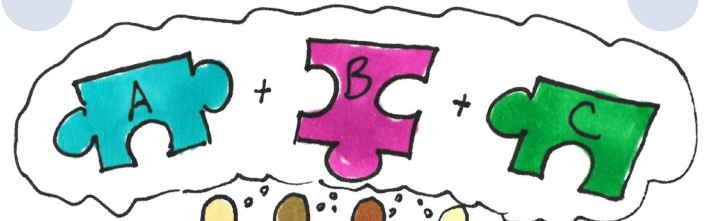


2



WE CAN USE THIS SAME APPROACH FOR GOD

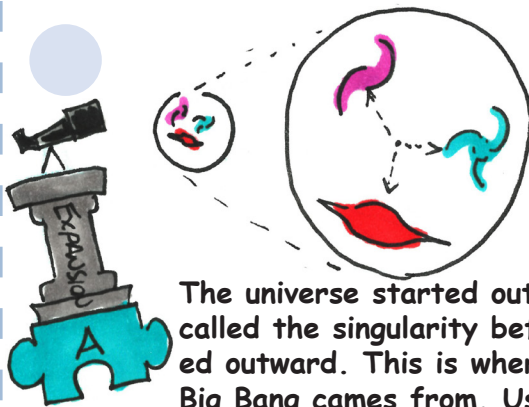
8



THEY MUST TAKE ALL THE FACTS TOGETHER TO COME TO A CONCLUSION.

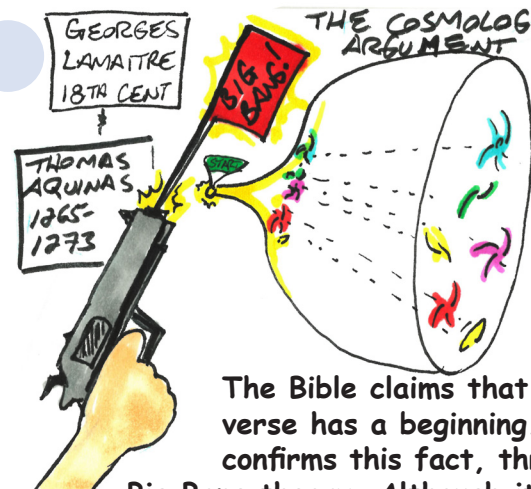
THIS IS CALLED CUMULATIVE EVIDENCE

6



The universe started out as one glob called the singularity before it exploded outward. This is where the name Big Bang comes from. Using the Hubble telescope, & the James Webb telescope, we can measure the distance between the objects in the Universe to find out how far they have travelled since the beginning of time. Giving us the its age

12



The Bible claims that the Universe has a beginning. Science confirms this fact, through the Big Bang theory. Although it is called a "the ory" it has been repeatedly confirmed as the most accurate answer we have for our Universe

10

10% He

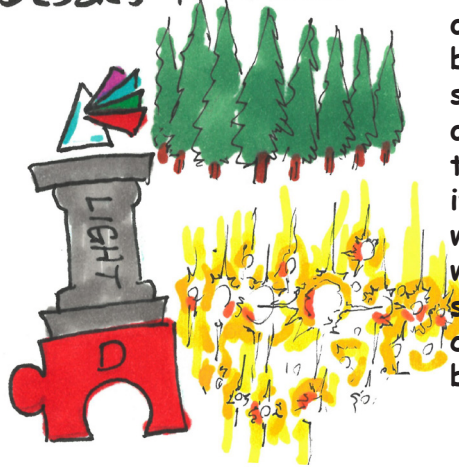
10% + 15% = 25%

A prediction was made & later confirmed, that the Big Bang made up 10% Helium, & the existing Stars should form the remaining observable Helium of 15% Helium, totalling 25% Helium

25% He

13

OLBER'S PARADOX



In a forest, we only see green because there are so many trees, one in front of the other. if the universe were infinite, we would see only starlight, because there would be infinite stars

15

WHY?

I WILL NEVER LEAVE YOU BROS

ME NEITHER YA!

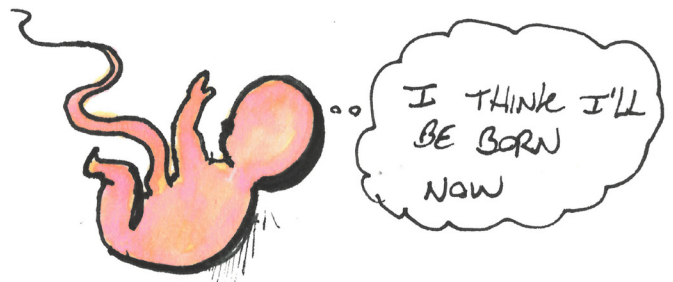
I AGREE

BECAUSE... SPACE, TIME, ENERGY & MATTER ARE INSEPERABLE

- You cannot have passing of time without motion
- You cannot move something without powering it
- You cannot power something that has no substance
- You cannot have motion or substance without the space for it

17

IN OTHER WORDS...



...NOTHING CAN CAUSE ITSELF!

19

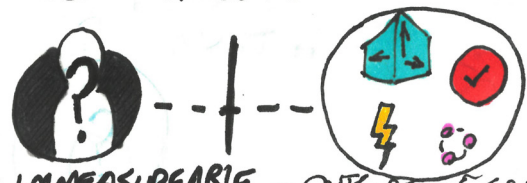
I CAN'T DO IT, I'M NERVOUS

IF OUR UNIVERSE CANNOT CAUSE ITSELF TO BEGIN, WHAT CAUSED IT?

NOW PRESENTING THE UNIVERSE!

21

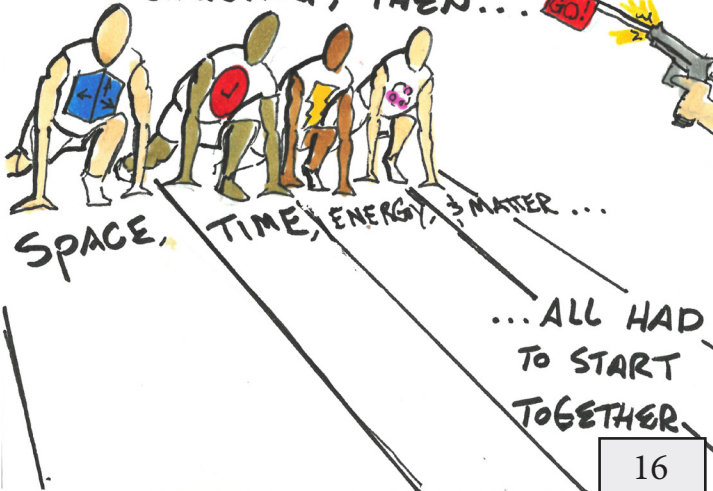
SINCE WE KNOW THIS CAUSE IS OUTSIDE OF OUR UNIVERSE, THEN WE KNOW IT MUST HAVE THESE ATTRIBUTES...



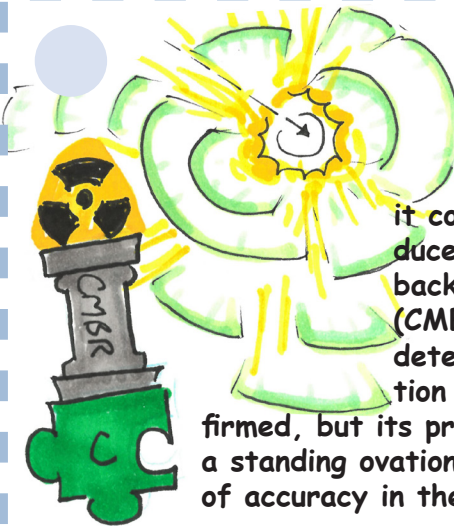
- IMMENSUREABLE - OUTSIDE OF SPACE
- TIMELESS/ ETERNAL - OUTSIDE OF TIME
- POWERFUL - OUTSIDE OF ENERGY
- IMMATERIAL - OUTSIDE OF MATTER

23

IF OUR UNIVERSE HAS A BEGINNING, THEN...



16



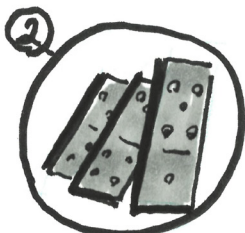
Since the BIG BANG started out hot, when it cooled it should produce a Cosmic background radiation (CMBR) which we can detect. This prediction was not only confirmed, but its predictors received a standing ovation due to the level of accuracy in their prediction

14

WE HAVE 2 SEPARATE SYSTEMS AT WORK



THE FORCE THAT CAUSES SOMETHING TO BEGIN



THE SOMETHING THAT IS CAUSED TO BEGIN

20

THE LOGIC GOES LIKE THIS...



SOMETHING THAT HAS A BEGINNING HAS A CAUSE.

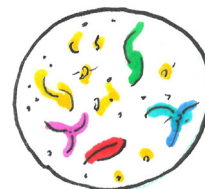
18

WE NOW KNOW OUR UNIVERSE BEGAN & WAS CAUSED, BUT HOW DO WE KNOW IT WASN'T BY ACCIDENT?



24

WE DON'T HAVE ENOUGH EVIDENCE TO SAY WHAT THIS CAUSE IS BUT...



...WE NOW KNOW THIS CAUSE MUST BE SEPARATE FROM OUR UNIVERSE!

22

ANTHROPIC PRINCIPLE

BRANDON CARTER 1973

LIFE EXISTS

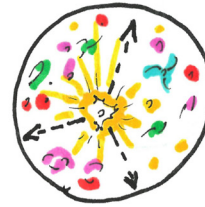
HE LIVES! I GUESS I TUNED EVERYTHING JUST RIGHT

THEREFORE THE PROPERTIES OF THE UNIVERSE MUST BE TUNED TO ALLOW LIFE TO EXIST

25

THERE'S MANY EXAMPLES TO CHOOSE FROM, LET'S LOOK AT A FEW...

① THE COSMOLOGICAL CONSTANT



$$\Lambda = 2.036 \times 10^{-35} \text{ s}^{-2}$$

EXPANSION SPEED OF THE UNIVERSE

0.0000000000
00000000000
00000000000
000002036

27

② GRAVITATIONAL CONSTANT

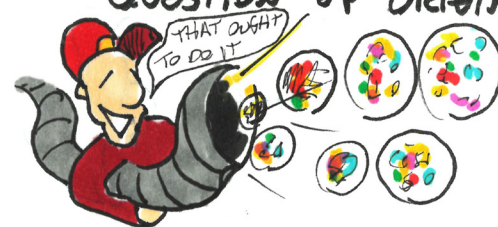
$$G = 6.6743 (\pm .00015) \times 10^{-11} \text{ m}^3 \text{ kg}^{-1} \text{ s}^{-2}$$

PULL STRENGTH OF GRAVITY BETWEEN 2 OBJECTS, IF IT IS TOO WEAK PLANETS & STARS CANNOT FORM, TOO STRONG, STARS LIVE & DIE TOO QUICKLY

29

TWO PROBLEMS ARISE IF THE MULTIVERSE DOES EXIST:

1) IT DOESN'T ANSWER THE QUESTION OF ORIGIN...



...THERE'S STILL A NEED FOR A CAUSE/FORCE TO CREATE MANY UNIVERSES INSTEAD OF ONE!

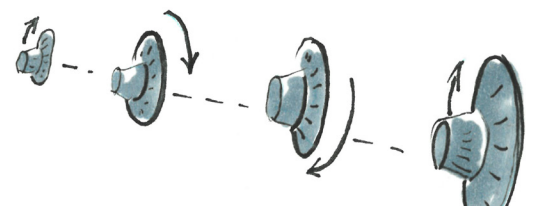
31

EITHER WAY OUR UNIVERSE IS ONE OF A KIND!



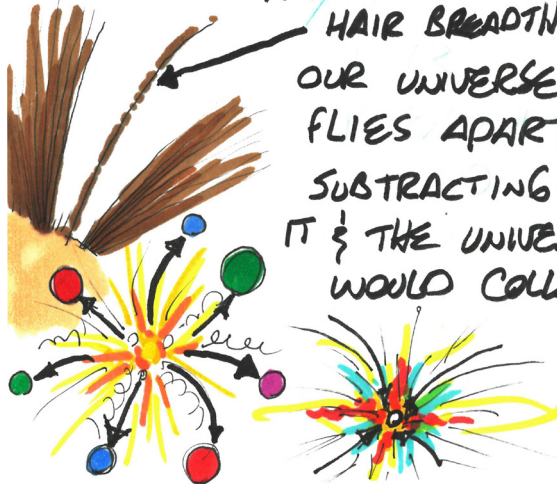
33

BUT IS IT POSSIBLE THAT THIS FINE TUNING EVOLVED OVER TIME, & INSTEAD WAS UNINTENTIONAL CAUSE & EFFECT?



35

CHANGING IT BY ADDING A HAIR BREADTH $\frac{1}{3}$ OUR UNIVERSE FLIES APART; SUBTRACTING FROM IT $\frac{1}{3}$ THE UNIVERSE WOULD COLLAPSE



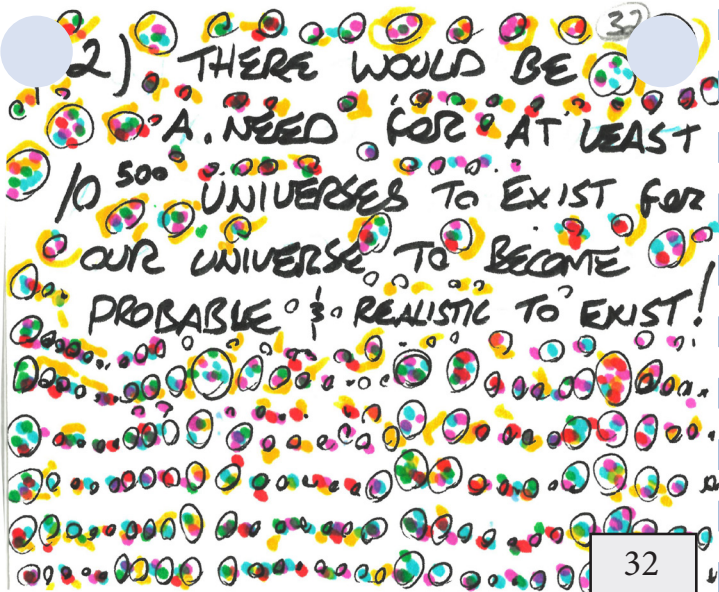
28

BUT IS THERE EVIDENCE THAT THE UNIVERSE IS TUNED, $\frac{1}{3}$ IS IT FINE TUNED ENOUGH TO SUGGEST IT WAS INTENTIONAL $\frac{1}{3}$ NOT RANDOM?



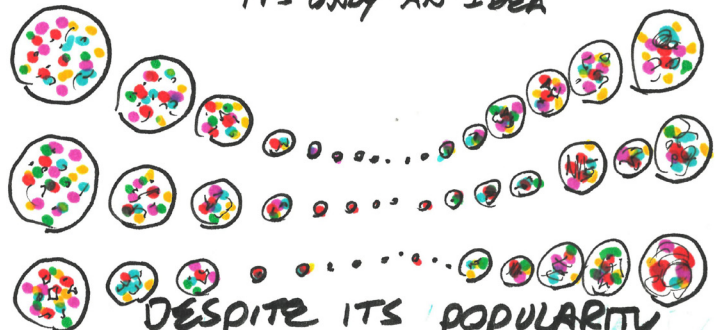
26

2) THERE WOULD BE A NEED FOR AT LEAST 10⁵⁰⁰ UNIVERSES TO EXIST FOR OUR UNIVERSE TO BECOME PROBABLE $\frac{1}{3}$ REALISTIC TO EXIST!



32

BUT WHAT ABOUT THE MULTI-VERSE? WELL... IT'S ONLY AN IDEA



DESPITE ITS POPULARITY, THERE IS ~~0~~ ZERO EVIDENCE THAT IT EVEN EXISTS

30

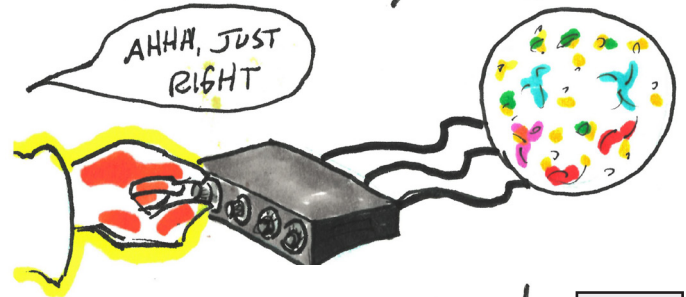
ALL THE CONSTANTS/LAWS OF OUR UNIVERSE EXISTED FROM THE VERY START, $\frac{1}{3}$ THEY HAVE REMAINED UNCHANGED, THAT IS WHY THEY ARE CALLED CONSTANTS.



WE'LL NEVER LEAVE YOU WE'RE FAMILY

36

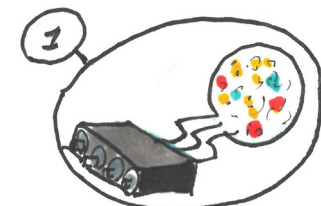
THESE ARE JUST A FEW EXAMPLES OF MANY, BUT IT PROVES OUR UNIVERSE IS IN FACT A FINALLY TUNED...



... UNIVERSE!

34

SO THE ANTHROPIC PRINCIPLE GOES LIKE THIS



1 ANYTHING THAT IS TUNED

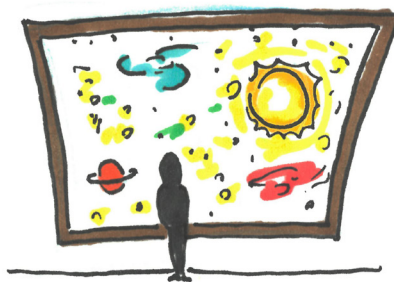


REQUIRES A FORCE WITH THE INTELLIGENCE, UNDERSTANDING & ABILITY TO TUNE IT

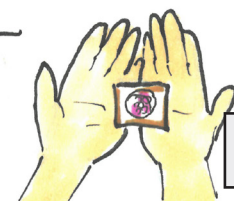
37

2 SEPARATE SYSTEMS

OKAY, BUT THAT'S THE BIG PICTURE...



WHAT ABOUT THE SMALL PICTURE?



39

NICOLAS MALEBRANCHE 18TH CENT.

PREFORMATION VS EPIGENESIS

MICHAEL BEHE PRESENT DAY

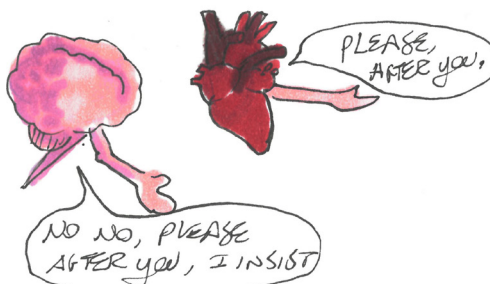
IRREDUCIBLE COMPLEXITY



WOW, THAT'S COMPLEX

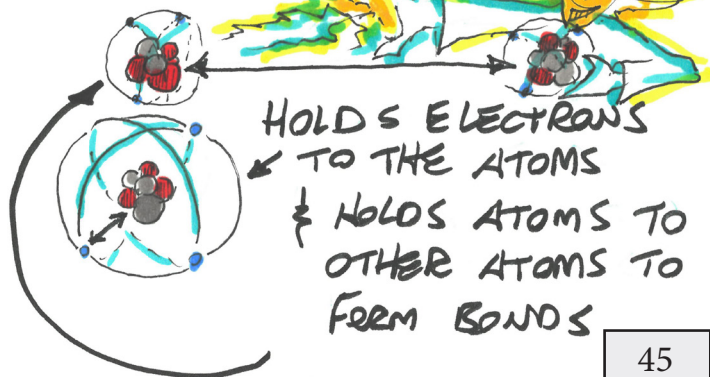
41

IF ONE IS DEPENDENT ON THE OTHER & VICE VERSA, & THEY BOTH MUST FUNCTION TOGETHER SIMULTANEOUSLY THEN HOW DID THEY EVOLVE?



43

THE ELECTRO MAGNETIC FORCE



HOLDS ELECTRONS TO THE ATOMS & HOLDS ATOMS TO OTHER ATOMS TO FORM BONDS

45

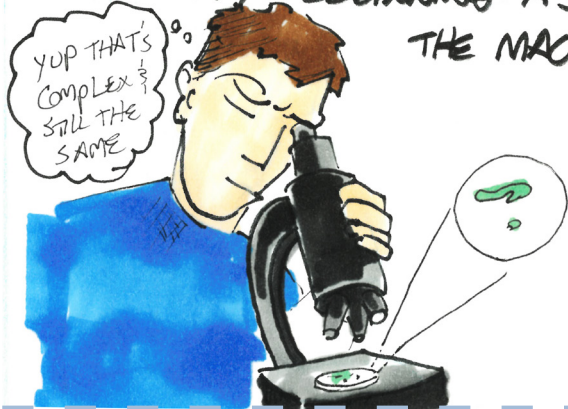
4 IN 1953 JAMES WATSON & FRANCIS CRICK DISCOVERED THE MOLECULAR CODE OF DNA!



DEAR DIARY, I HAVE A SECRET

47

IS THE MICROSCOPIC EQUALLY
COMPLEX & CONSTANT FROM
THE VERY BEGINNING AS
THE MACRO?



40

THIS TUNING FORCE
MUST HAVE THESE
ATTRIBUTES



38

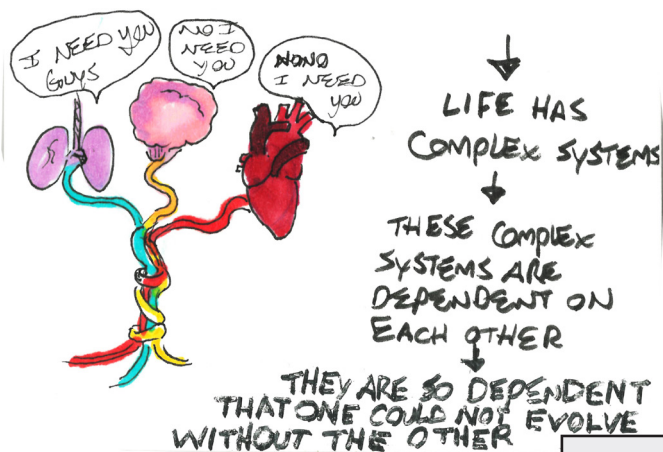
THE STRONG NUCLEAR FORCE



IT HAS A RANGE OF
 10^{-15} m & HOLDS NUCLEI
TOGETHER

44

IRREDUCEABLE COMPLEXITY
GOES LIKE THIS...



42

WHAT WAS FOUND WAS
A SEQUENCE IN THE CODE
— AATGCCT —



LIKE A COMPUTER, OR A
BOOK, THIS SEQUENCE
CODE FORMED A
LANGUAGE!

48

THE STRONG NUCLEAR FORCE
COUNTERACTS THE
ELECTROMAGNETIC FORCE



IF ONE WERE STRONGER OR
WEAKER THAN THEY ARE,
CHEMICAL BONDS
ESSENTIAL FOR LIFE WOULD NOT FORM

46

THIS LANGUAGE IS THE INSTRUCTION MANUAL TO CREATE THE PROTEINS NEEDED TO FORM LIVING THINGS



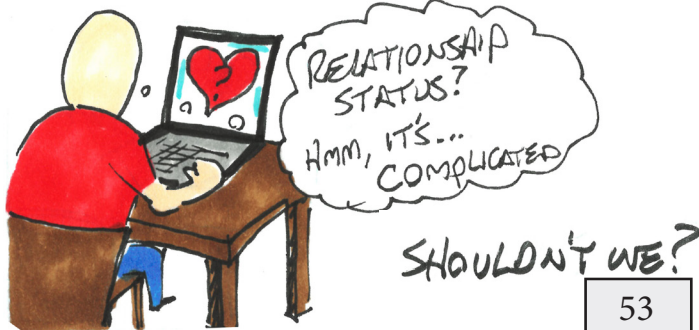
49

FOR THIS LANGUAGE TO RANDOMLY GENERATE EVEN ONE PROTEIN ON ITS OWN, WITHOUT HELP FROM ANY LANGUAGE ARTS TEACHER IS ASTRONOMICALLY IMPROBABLE, SINCE ONE PROTEIN HAS APPROX 1000 PAIRS OF GENES



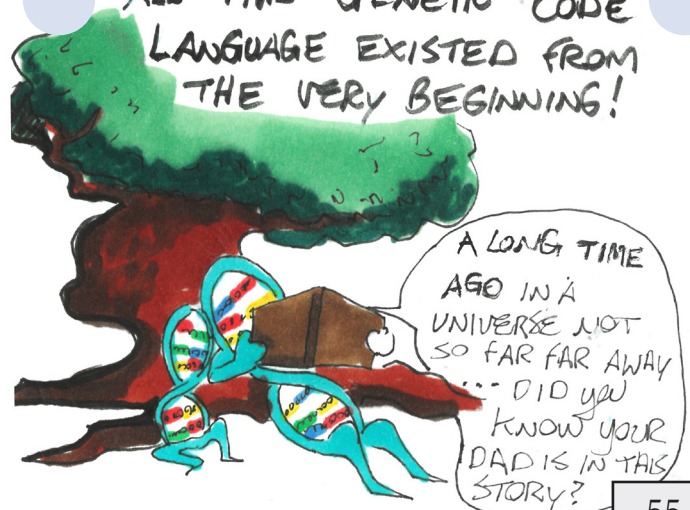
51

THAT'S NOT ACCOUNTING FOR 'TYPES!' BUT SINCE WE'RE HUMAN, WE SHOULD HAVE THE MOST COMPLEX GENOME....



53

ALL THIS GENETIC CODE LANGUAGE EXISTED FROM THE VERY BEGINNING!



55

IF OUR UNIVERSE IS TOO FINELY TUNED & IRREDUCIBLY COMPLEX FROM THE VERY BEGINNING TO EVOLVE OVER TIME, WHAT OTHER EXPLANATION IS THERE?



57

AN OBJECT THAT HAS A CLEAR PURPOSE, WITH MANY PARTS ALL FUNCTIONING TOGETHER...



59

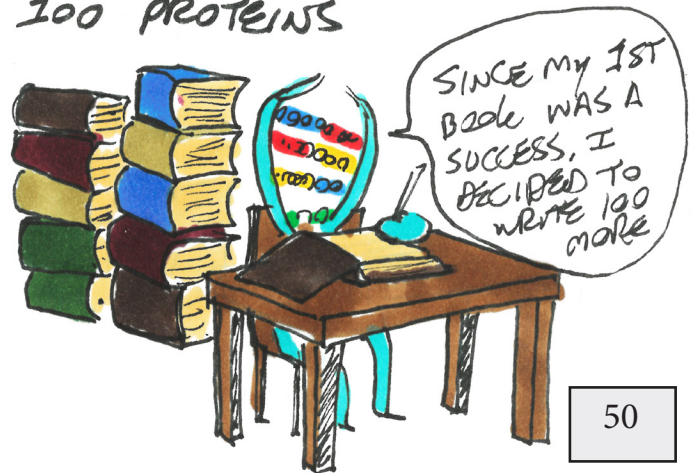
THAT'S JUST FOR A SINGLE CELLED ORGANISM!



Humans have 3.2 billion pairs of genetic letters in the human genome! It would take a human typing 60 words/min 8hrs/day 50 years to write it all down!

52

ONE SINGLE CELLED ORGANISM HAS OVER 100 PROTEINS



50

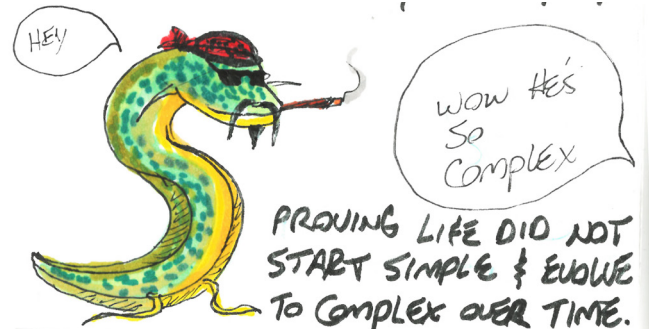
IT IS REASONABLE TO CONCLUDE THAT THIS CAUSE FORCE THAT CAUSED THIS GENETIC CODE TO EXIST...



IS
- INTELLIGENT
- CAN COMMUNICATE BY TRANSLATING GENETIC CODE INTO LIVING THINGS

56

Actually the Marbled Lungfish has 43 billion genetic pairs which is 14x more than humans...

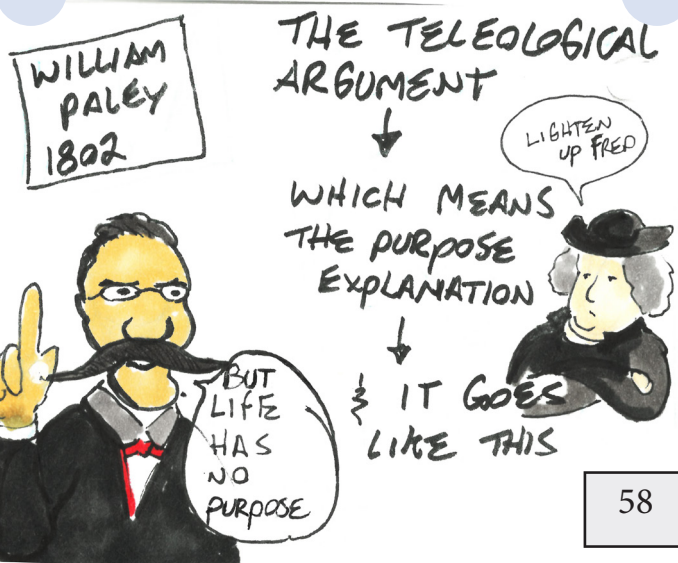


54

IT CANNOT BE EXPLAINED TO EXIST FROM A NATURAL PROCESS



60



58

BUT IT EXISTS REGARDLESS,
DESPITE IT BEING IMPROBABLE
FOR IT TO.



61

SINCE THE UNIVERSE IS
COMPLEX ✓



HAS MANY
CO-FUNCTIONING
PARTS ✓

∴ EXISTS DESPITE
NO NATURAL
PROCESS CAN
EXPLAIN ITS
EXISTENCE ✓

63

THIS CAUSE/FORCE MUST
HAVE THESE ATTRIBUTES

- IS A DESIGNER

- IS INTENTIONAL

- GIVES FUNCTION & PURPOSE



65

IMMANUEL
KANT
1763

∴
C.S. LEWIS
1942



THE TRANSCENDENTAL
ARGUMENT

↓
SOMETHING EXISTS I.E.
(THOUGHT EXISTS)

ONLY IF SOMETHING
EXISTS-(THOUGHT EXISTS)

↓
SOMETHING EXISTS
(IN THIS CASE THOUGHT)
THEREFORE THOUGHT EXISTS

67

THEN OUR THOUGHTS ARE
ALSO A PRODUCT OF RANDOM
CHEMICAL & PHYSICAL PROCESSES



69

BUT IF OUR UNIVERSE WAS
DESIGNED & MADE BY A DESIGNER,
THEN EVERYTHING, INCLUDING
THOUGHT, WAS CREATED BY
DESIGN.



71

JUST LIKE A PHONE HAS A PHONE MAKER...



... THE UNIVERSE MUST HAVE A UNIVERSE MAKER

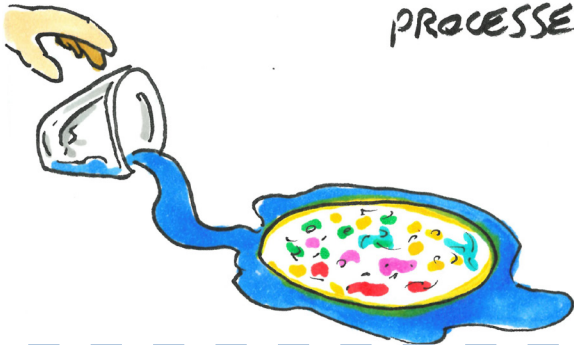
64

IMPLIES THAT THIS OBJECT OR THING MUST HAVE BEEN DESIGNED BY AN INTELLIGENT MIND



62

IF THE UNIVERSE IS A PRODUCT OF RANDOM CHEMICAL & PHYSICAL PROCESSES



68

LET'S SAY THIS INTELLIGENT FORCE EXISTS...



HOW DO WE KNOW IT'S MORAL OR LOVING & NOT JUST AN UNCARING MECHANISM?

66

IF WE WERE CREATED TO THINK, THEN THIS CAUSE FORCE MUST KNOW WHAT THOUGHT IS & USES THOUGHT ALSO.



- THINKS

- MAKES CHOICES



72

IF OUR THOUGHTS ARE RANDOM, JUST AS WE ARE RANDOM...



HOW CAN I TRUST MY THOUGHTS?

70

BUT IS THIS CAUSE FORCE MORAL?



OR ARE WE HIS EXPERIMENT?

73

DID WE MAKE IT?



OR... LIKE THE UNIVERSAL CONSTANTS, WAS IT ALWAYS THERE?

75

IF HUMANS CREATED

MORALITY, THEN IT WOULD CHANGE FROM TIME PERIOD TO TIME PERIOD, PERSON TO PERSON, CULTURE TO CULTURE.



77

WE SEE EVIDENCE THAT MORALITY DOESN'T CHANGE



MURDER IS MURDER, THEFT IS THEFT, LYING IS LYING, REGARDLESS OF TIME, PLACE, CULTURE, OR RACE

79

FOR EXAMPLE, NEWTON'S THEORY OF GRAVITY DID NOT CREATE GRAVITY. RATHER, GRAVITY'S LAW HAD ALWAYS EXISTED & HIS THEORY SIMPLY PUT A HUMAN NUMERICAL VALUE TO IT.



81

WE CAN EVEN MEASURE OURSELVES, BY THIS MORAL LAW!



83

EVOLUTION PROPOSES THAT THESE MORAL LAWS EVOLVED WITH SOCIETY OVER TIME



76

IF THAT IS TRUE, HOW DID THEY EVOLVE?



THE AXIOLOGICAL ARGUMENT

AN OBJECTIVE MORAL LAW SEEMS TO EXIST WHICH LIFE, INCLUDING HUMANS, APPEAR TO BE SUBJECT TO

LAWS ARE WRITTEN BY A LAW GIVER

WHO WROTE THIS MORAL LAW?

74

WITH THE SCIENTIFIC DISCIPLINES, PHYSICS, MATHEMATICS, CHEMISTRY, BIOLOGY, ETC, WE DO NOT CREATE THE LAWS OF NATURE, WE DISCOVER THEM



80

ALTHOUGH HUMAN VALUES & BYLAWS & MAN MADE LAWS DO CHANGE ALL THE TIME



78

FOR EXAMPLE; IS THIS PERSON MAKING A GOOD OR BAD DECISION?



84

IN THE SAME WAY, MORALITY IS DISCOVERED & LEARNED, IT IS NOT CREATED



82

BUT WHAT IS THIS MORAL LAW WE USE TO MEASURE OURSELVES?



THESE FOUNDATIONAL CORE MORAL LAWS & TRUTHS REMAIN UNALTERED DESPITE PAST & PRESENT HUMAN ATTEMPTS TO ALTER THEM



IF MORALITY DOES NOT EXIST, WE COULD NOT SAY "I'M IMPERFECT" ...

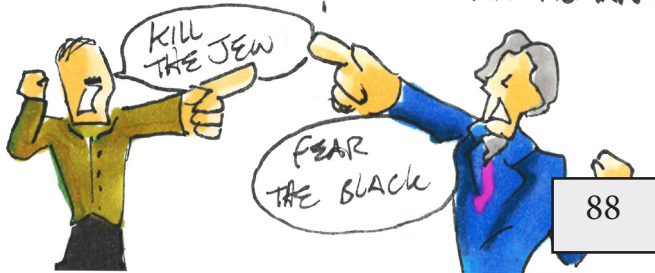


TO MAKE/ CAUSE A CONSTANT & GOOD LAW THE CAUSE FORCE MUST ALSO BE - GOOD THEREFORE PERFECT



BECAUSE THE DEFINITION OF GOOD IS TO BE "MORALLY PERFECT"

SINCE THE MORAL LAW COULD NOT BE CHANGED, CERTAIN GROUPS & LEADERS JUSTIFIED THEIR IMMORAL ACTIONS BY CLASSIFYING OTHER PEOPLE GROUPS AS "CRIMINALS" OR /& LESS THAN HUMAN



88

THIS MORAL LAW IS CALLED THE 10 COMMANDMENTS



& THEY ARE FOUNDATIONAL TRUTHS WRITTEN INTO NATURE

86

CONSIDERING ALL THE EVIDENCE WE HAVE LOOKED AT,

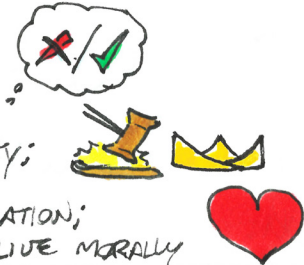


WHAT FORCE OR BEING IS MOST LIKELY TO FIT THAT DESCRIPTION?

92

BECAUSE THIS MORAL LAW IS CONSTANT & BEGAN/ EXISTS APART FROM US, WHATEVER CAUSED THIS LAW TO EXIST MUST HAVE THESE ATTRIBUTES

- IS MORAL; KNOWS RIGHT FROM WRONG
- HAS AUTHORITY; CAN MAKE LAW
- LOVES HIS CREATION; WANTS US TO LIVE MORALLY



90

96

94

IN SUMMARY THIS CAUSE
FORCE MUST HAVE THESE
ATTRIBUTES

